



**LIVERMORES**  
THE ESTATE AGENTS

1 Bedrooms

Flat

Located in Dartford

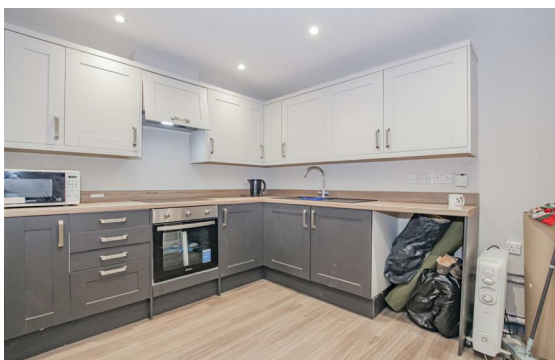
£1,300 PCM



[lettings@livermores.co.uk](mailto:lettings@livermores.co.uk)

[www.livermores.co.uk](http://www.livermores.co.uk)

01322 311427



Situated in the heart of Crayford High Street, this newly refurbished one-bedroom flat offers a perfect blend of modern living and convenience. Bright and spacious, the flat is designed to provide a comfortable and inviting atmosphere, making it an ideal home for individuals or couples. The property features a well-appointed reception room that serves as a welcoming space for relaxation or entertaining guests. The bedroom is generously sized, ensuring ample room for furnishings and personal touches. The bathroom is modern and functional, catering to all your daily needs. One of the standout features of this flat is its prime location. Situated close to a variety of amenities, residents will find shops, cafes, and restaurants just a short stroll away. Additionally, excellent public transport links are readily accessible, making commuting to nearby areas both easy and efficient.

This flat is available for immediate rental, providing a fantastic opportunity for those looking to move in without delay. With its contemporary design and superb location, this property is not to be missed. Whether you are seeking a new home or a convenient base, this flat in Crayford is sure to meet your needs.

## Energy Efficiency Rating:

Agents Note: Whilst every care has been taken to prepare these particulars, they are for guidance purposes only. All measurements are approximate and are for general guidance purposes only and whilst every care has been taken to ensure their accuracy, they should not be relied upon and potential buyers/tenants are advised to recheck the measurements.

**LIVERMORES**  
THE ESTATE AGENTS

1 Hythe Street  
Dartford  
Kent  
DA1 1BE

01322 311427

[lettings@livermores.co.uk](mailto:lettings@livermores.co.uk)

[www.livermores.co.uk](http://www.livermores.co.uk)